



BASIC RO WATER SYSTEM

WPS51-015



INDEX

1. Preface	2
2. Specification	2
3. Water Flow Chart	3
4. Working Environments	4
5. Installation	5
5.1 Preparation for installation	5
5.2 Tube and adapter's connection	5
5.3 Installation steps	6
6. Specification of Microcomputer Controller	9
6.1 Specification of status icons	9
6.2 Mode of connection	10
6.3 Technique data	11
6.4 Filters management	11
7. Usage Guide	12
7.1 Starting Up:	12
7.2 Getting Corresponding Pure Water:	12
7.3 Standby:	13
7.4 Shutdown:	13
7.5 The usage to keep high quality pure water:	13
8. Water Quality Test	14
9. Consumables	14
10. Normal Trouble Diagnosis	15
11. Warranty & Repair Regulation	16

1. Preface

Dear customer, in the beginning, we sincerely thanks for choosing our water purification system. This water purification system has incorporated new cutting-edge technology. It is installed and used easily, and can provide you with RO water and ultrapure water for science research. So, it will benefit your work. For the water purification system’s maximum efficiency, it is suggested that the user manual should be read before installation. Any question in the installation process, please contact our technology engineers or dealers.

2. Specification

Model	WPS51-015
Output(25°C)*	15 liters/hour
Flow rate	Up to 2 liters/minute (with pressure tank)
Pure water outlet	1: reverse osmosis water
RO water quality	
Ion rejection rate	98-99%(with new RO membrane)
Organics rejection rate	>99% (when MW>200 Dalton)
Particles and bacteria rejection rate	>99%
Feed water requirements	Tap water, temperature:5-35°C,pressure:1.0-4.0bar
Pure water outlet	RO water
Dimension/weight	Length xWidth xHeight: 410x320x420mm/ Weight: about 15Kg
Electrical requirements	AC100-240V,50/60Hz
Power	72W
Standard configuration	Main body (Including 1 set of cartridge)+ TDS/conductivity test pen

Purification System		
Sequence number	Specification	Quantity/set
LV.1	10" spun fiber filter	1
LV.2	10" granular active carbon filter	1
LV.4	100GPD RO membrane(15)	1
	200GPD RO membrane(30)	1

Table 1
REMARKS:

* The value will be influenced by temperature and feed water's quality.

3. Water Flow Chart

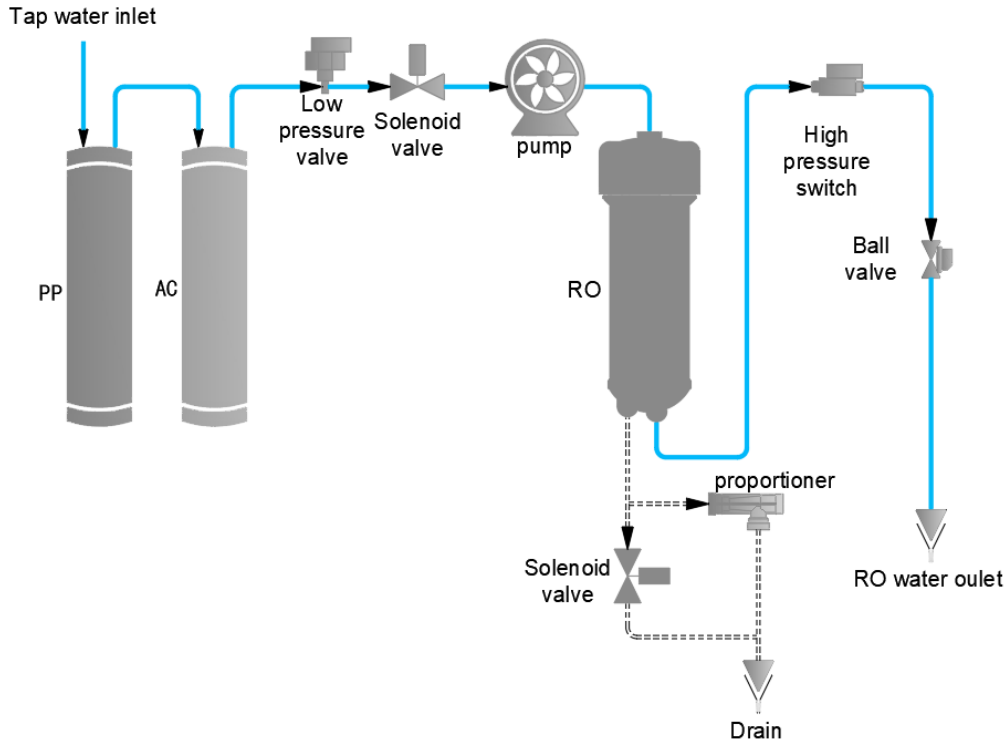


Figure 1

4. Working Environments

- Inlet water: Tap water (TDS<200ppm will be suggested).
If inlet water TDS>200ppm, pretreatment is recommended. Water with higher TDS will affect the quality of outlet water and life of purification cartridge.
 - Work temperature: 5-45°C
 - Pressure: 1.0-4.0bar
 - Power: AC100-240,50/60Hz,72W
- 【Clean, dry working environments would be suggested!】

5. Installation

5.1 Preparation for installation

- The purification system should be installed horizontally and near to tap.

5.2 Tube and adapter's connection

The adapter of the machine is high quality easy-put adapter. And material of tube is high quality's PE. Tube installation and drag diagram

Tube installation

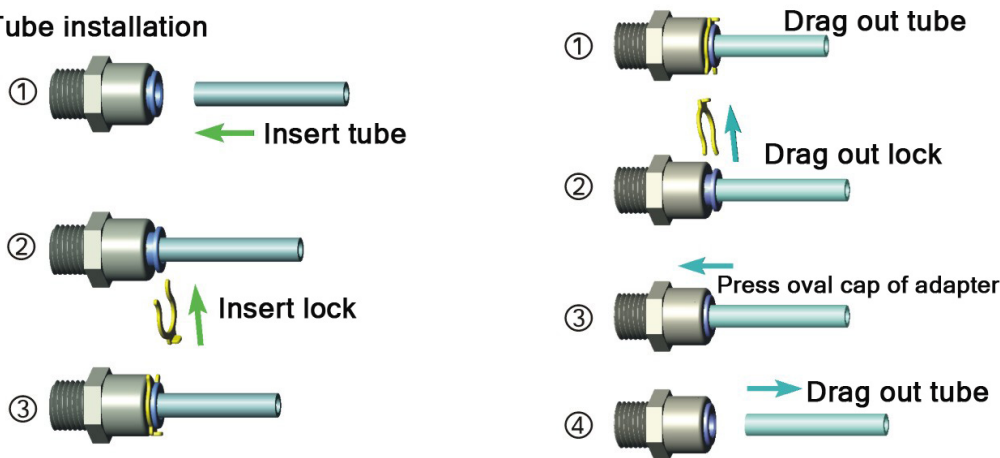


Figure 2



• ATTENTION:

- The tube should be cut with special tube cutter for rounded cut section. And rounded cut section should be guaranteed as much as possible with other cut tools.
- Connect the tube-press the oval cap of the interface strongly, then insert the tube to the bottom of adapter.
- Take off the tube-press the oval cap of the interface strongly, then drag out the tube. Do not drag when the tube can't be dragged out any more.
- The fore-end of the tube, which has been inserted to adapter, should be cut, when it will be used again.
- Sufficient PTFE thread seal tape should be used in all the threaded joints for water leakage inhibitor or preventing.

5.3 Installation steps

- (1). Open the packing-case, take out main body, accessory box, water tank (optional).
- (2). Take out adapters and tube from accessory box, and read the Instruction Manual carefully.
- (3). External interface are on the back of machine, and it is labeled with different color's label. Moreover, its adapters are inserted with different color's stop plug.



• ATTENTION:

- Stop plug should be pulled out before the following steps.

- (4). Connect To Tap Water

There are two ways to connect to the tap.

Guide Chart of 2 Ways to Connect To The Tap

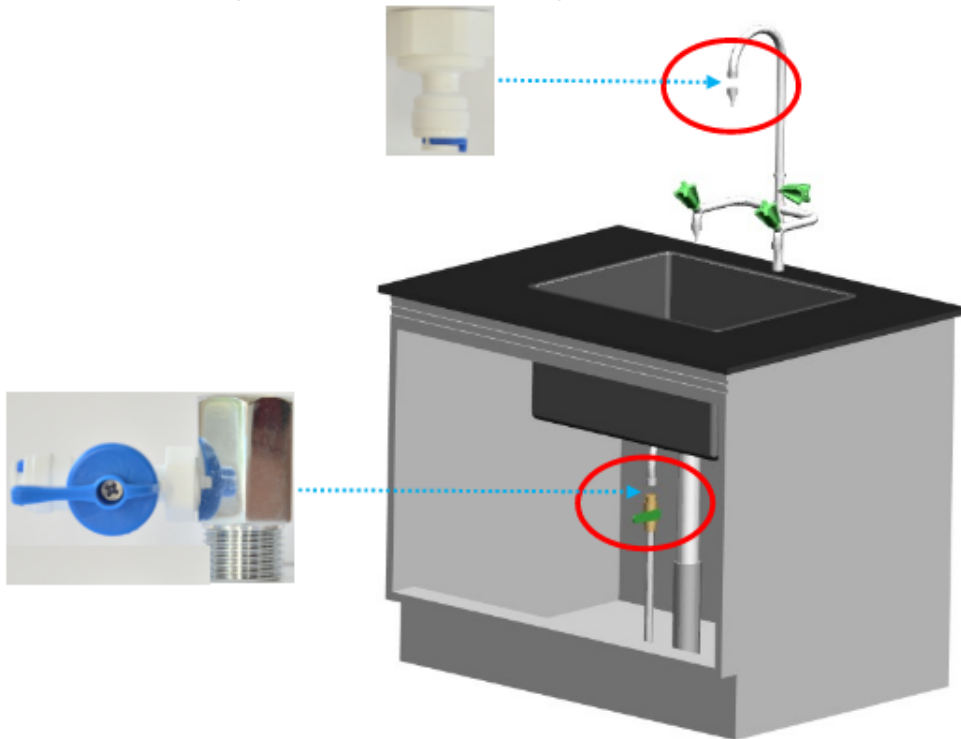


Figure 3

1, 2 is the place where the interface of machine's inlet water should be connected.

- 1st way-with tap water adapter 1(1/2"internal thread to 3/8"fast-plug) to connect to tap water.

1st. Step: connect tap water adapter 1 to water source

Close the valve of the gooseneck. Dismantle the faucet of gooseneck. Screw tap water adapter 1 into the external thread of gooseneck.

2nd. Step: connect tap water adapter 1 to interface of machine's inlet water

Use 3/8" PE tube with a suitable length. Insert one side into the interface of tap water adapter 1, and insert the other into the interface with blue label marked "To inlet water" at the back of machine.

- 2nd way-with tap water adapter 2(tee joint and 3/8"ball valve) to connect to tap water.

1st. Step: connect tap water adapter 2 to water source

Close the chief valve of tap water. Dismantle the tap.

Screw the 3/8" ball valve with external thread into the side thread with internal thread of tee joint.

Screw the tap into the internal thread at one end of the tee joint, and at last, screw the other end with external thread of the tee joint(with 3/8" ball valve and the tap at this time) into the internal thread of the tube, where the tap has been connected.



• ATTENTION:

- Sufficient PTFE thread seal tape should be used in all the threaded joints for water leakage inhibitor or preventing

2nd. Step: connect tap water adapter 2(3/8"ball valve) to interface of machine's inlet water

Use 3/8" PE tube with a suitable length. Insert one side into the interface of 3/8"ball valve, and insert the other into the interface with blue label marked "To inlet water" at the back of machine.



• ATTENTION:

- Extra pretreatment filters (optional) should be connected between the water source and main body.

(5). Connect To RO Wastewater

Use 1/4" PE tube with a suitable length. Insert one side into the interface with black label marked "To

drain" at the back of machine, and the other side is directed to drain. (DO NOT JAM!!)
Thus the installation is OK.

Installation Guide Chart

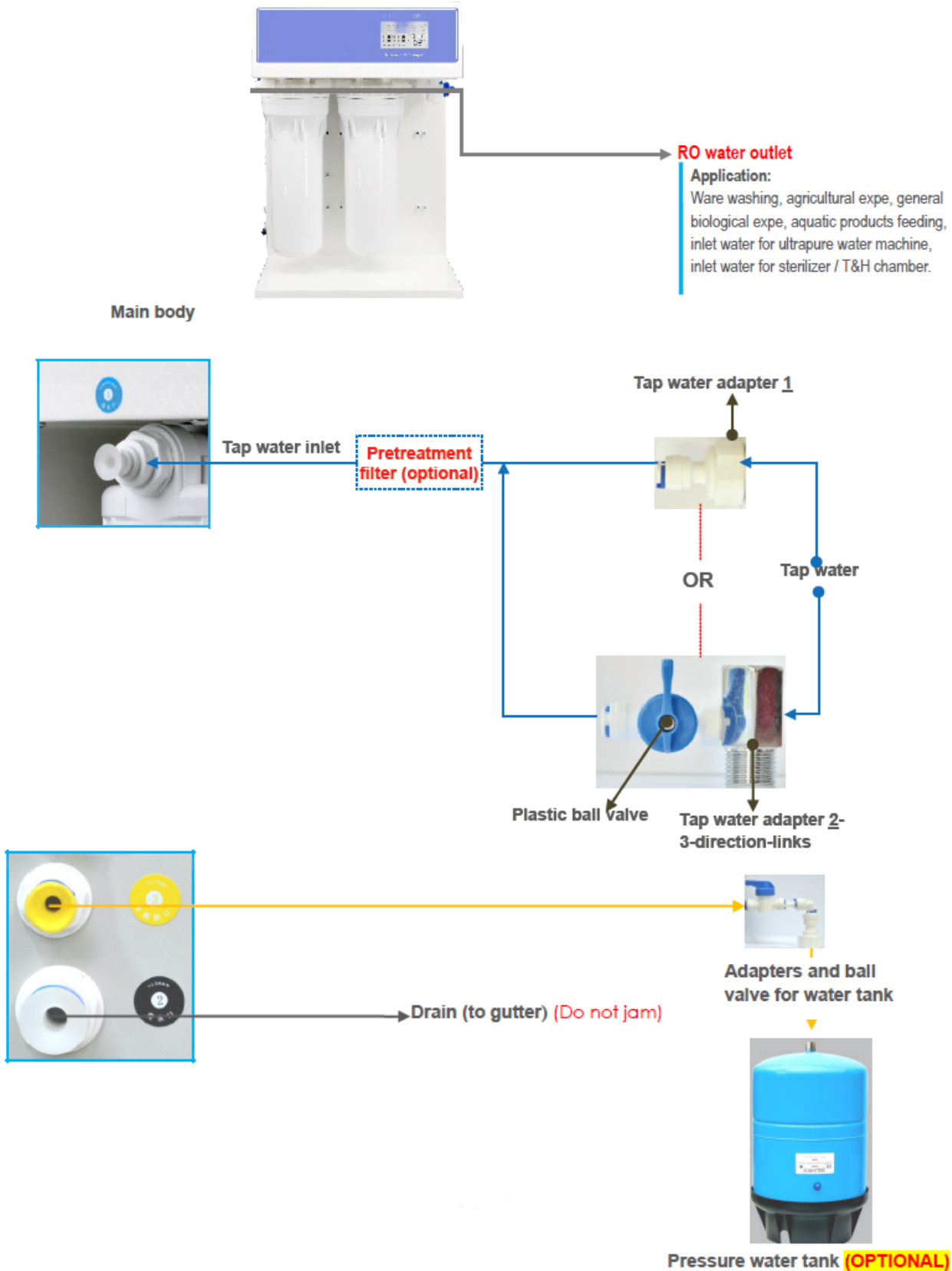


Figure 4

6. Specification of Microcomputer Controller

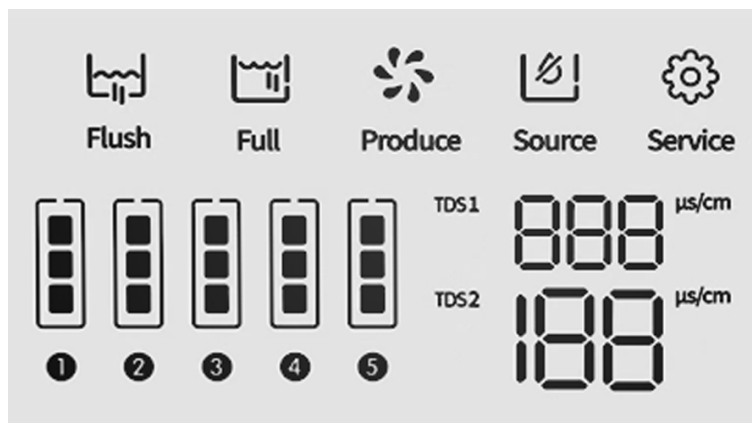







Figure 5

6.1 Specification of status icons

Status	Working Status
 Flush	<p>The flushing identifier is flashing when the system is in flushing status; The flushing identifier is being bright when it is finished.</p> <ol style="list-style-type: none"> 1. Turn on the power, the system would automatically flush about 30 seconds; 2. When it is full of water, the system would automatically flush about 10 seconds; 3. After quit the process of lacking water, the system would automatically flush about 30 seconds; <p>(High-pressure pump work, inlet valve open, flush valve open)</p>
 Produce	<ol style="list-style-type: none"> 1. The produce water identifier is flashing when the system is in producing water status; The produce water identifier is being bright when it is finished. 2. It enters the producing water process after detecting the low-pressure switch and high-pressure switch shut off. <p>(High-pressure pump work, inlet valve open, flush valve open)</p>
 Full	<p>The full identifier is flashing when the system is in full water status, and the produce water, check, flashing, lack identifier is being bright. The system would enter the process of full water, when the water pressure of the high-pressure switch equal to the setting value.</p> <p>(High-pressure pump work, inlet valve open, flush valve open)</p>
 Source	<p>The lack identifier is flashing when the system is in lacking water status; The lack identifier is being bright when it is finished. The system would enter the process of lacking water, and be alarming for 10 times, when the water pressure of the low-pressure switch lower than the setting value.</p> <p>(High-pressure pump work, inlet valve open, flush valve open)</p>
 Service	<p>The check identifier is flashing when the system is in check status; The check identifier is being bright when it is not. The system would enter the process of check, and be alarming for 30 times, when no full water after continuous work for 6 hours. It will in normal work after power on again.</p> <p>(High-pressure pump work, inlet valve open, flush valve open)</p>
Backlight	<p>The backlight will go out after 120 seconds when the system is in full water status. The backlight is being bright for the rest.</p>

TDS	Raw water TDS value range is 0-999 μ s/cm μ s/cm (RO water value) Pure water TDS value range is 0-199 μ s/cm (DI water value)
-----	--

Table 2

6.2 Mode of connection

Serial Number	Color	Layout	Serial Number	Color	Layout	Serial Number	Color	Layout
1	Yellow	Low-pressure switch	6	Black	Inlet valve	11	White	24Vdc
2	Blue	High-pressure switch	7	Yellow	Low-pressure switch	12	Pink	24Vdc
3	Blue	High-pressure switch	8	Green	Pump			
4	Red	Flush valve	9	Black	Inlet valve			
5	Green	Pump	10	Red	Flush valve			

Table 3

P4- RO water connection port: single way TDS sensor

P5- DI water connection port: single way TDS sensor

6.3 Technique data

- 1、 Working mode: continuous work for a long time
- 2、 Working voltage: DC24V
- 3、 Power: <1.5W(MAx)
- 4、 Load current: 3.5A
- 5、 Working temperature: -20°C - +70°C
- 6、 Load voltage: 24VDC
- 7、 Working moisture: 5%-85%

6.4 Filters management

(1). The filters service life is calculated depending on the accumulated working time of pump, and all the filters are listed as below:

- Filter 1: 450 hours (10" spun fiber filter)
- Filter 2: 900 hours (10" granular active carbon filter)
- Filter 3: 900 hours (10" granular active carbon filter)
- Filter 4: 1080 hours (RO membrane)
- Filter 5: indicated depending on the TDS2 value

Remark: The service life of filter 2 and filter 3 is the same filter (10" granular active carbon filter)

(2). The notes for service life of filters: for the first 4 filters, the service life is indicated by three lights of the bar-type indicator light. It will successively black out from up to down once the filter is consumed each one third. The last bar-type indicator light will keep flashing and being alarming for 3 times when the system in producing water process, once the service life time only remains 10%. All three bar-type indicator lights will keep flashing and the system will be alarming for 10 times when the system in producing water process, once the service life remains 0%. It reminds the user to change this filter.

(3). The reset operation for filters: For the first 4 filters, it will enter into the filters resetting status after pressing the reset button (down button of the back side controller) for 3 seconds. The filter 1 will be selected automatically and the other filters bar-type indicator lights are in black status. Then press the flush button (up button of the back side controller) to select the filter need to be reset. The according bar-type indicator light will be flashing, and the other filters being in black status. Press the reset button for 3 seconds to reset the service life for selected filter. The system will be alarming for 1 time and all filter' bar-type indicators will be in light. The system will auto quit if there is no resetting operation within 10 seconds.

(4). The notes for service life of filter 5: when the TDS2 tested value is more than $0\mu\text{s}/\text{cm}$ but less than $2\mu\text{s}/\text{cm}$, the filter is consumed one third; when it is more than $2\mu\text{s}/\text{cm}$ but less than $4\mu\text{s}/\text{cm}$, the filter is consumed two third; when it is more than $4\mu\text{s}/\text{cm}$ and being alarming for 5 times, it alarms that the filter is completely consumed.

7. Usage Guide

All data have been set in the factory. The machine will operate smoothly without any data-setting.

7.1 Starting Up:

Turn on the tap water valve and insert the power line into the power source, then the system begins to produce pure water.

7.2 Getting Corresponding Pure Water:

Open the ball valve, to get RO water. When getting water process is ok, close the ball valve.

7.3 Standby:

When RO water is not for use, the system will be in standby state. The system still produce RO water to store in the water tank (Optional). Until tank is full, the system will automatically stop. The system will begin to produce pure water again when any pure water is used.

7.4 Shutdown:

Turn off the tap water valve and drag out the power line. Then it is ok.



• ATTENTION:

• Make sure that the water source and power source is not connected when the system is not in the use state for long time. (for example, off duty).

7.5 The usage to keep high quality pure water:

- (1) The pure water is easily polluted by surrounding environment. So getting fresh pure water is suggested.
- (2) Keep source water tank from sunlight for microbe's reproducing.
- (3) When get high pure water, initial high pure water is suggested to drain to get steady pure water.
- (4) Avoid air bubble when get pure water to reduce air pollution.



• ATTENTION:

- The microbe's reproducing will reduce the life of filter cartridge when the machine does not work for long time. So the machine's work every 7-10days is necessary.

8. Water Quality Test

The system has 1 method of water quality measuring- PORTABLE TDS PEN.

- TDS pen (total dissolved solid, ppm), which is used to testing reverse osmosis water, tap water and deionized water's quality.

Judgement Standard of Water Quality

- Under normal conditions, new RO membrane's desalination rate is above 95%. It means that TDS of RO water should be less than TDS of inlet tap water×5%.
- If TDS of RO water > TDS of inlet tap water×10%, it means that RO membrane's desalination can't meet the minimum requirements. RO membrane should be replaced at once.
- Conversion relations between TDS and conductivity rate($\mu\text{s}/\text{cm}$):

If TDS<50ppm, conductivity rate($\mu\text{s}/\text{cm}$) \approx TDS×2

If TDS>200ppm, conductivity rate($\mu\text{s}/\text{cm}$) \approx TDS×(1.5~1.7)

9. Consumables

Item No.	Specification	Suggested replacement term
PC-10PP	10" spun fiber filter	About 2-6 months
PC-10AC-G	10"granular active carbon filter	About 4-6 months
RO-100GPD	100GPD RO membrane	About 12-24 months
RO-200GPD	200GPD RO membrane	About 12-24 months

Table 4

REMARKS:

- Worse inlet feed water quality or big dosage will reduce cartridge life.

10. Normal Trouble Diagnosis

Normal trouble	Cause	Diagnosis
No power	-No plug in -Power adapter broken	-Check the power connecting -Replace new adapter
No pure water goes out or a little amount of pure water	-Valve of pure water outlet broken -Pump broken -Cartridges or filters' life ends	-Replace new valve -Replace new pump -Replace new cartridges or filters
Cartridges' life warns	-Cartridges' life ends	-Replace new cartridges
Water leakage	-Adapter or something broken	-Check, insert and drag out again, replace
Water quality deteriorate	-Cartridges or filters' life ends -Water quality sensor broken	-Replace new cartridges or filters -Replace new water quality sensor

Table 4

All other matters not mentioned herein, please contact us directly.

11. Warranty & Repair Regulation

The products enjoy repair service since the day of purchase. In one year from the purchasing day, we are obliged to replace components for customers free of charge, due to non-human-behavior factors, except for:

- (1). All the consumables;
- (2). Damage caused by maloperation or use in abnormal situations;
- (3). Disassembly any part of the machine or human-behavior damage;
- (4). Not repaired by our serviceman.

LABSTAC

Labstac LLC

82 Wendell Avenue, STE 100, Pittsfield, MA, 01201, USA

Email: contact@labstac.com | Website: labstac.com